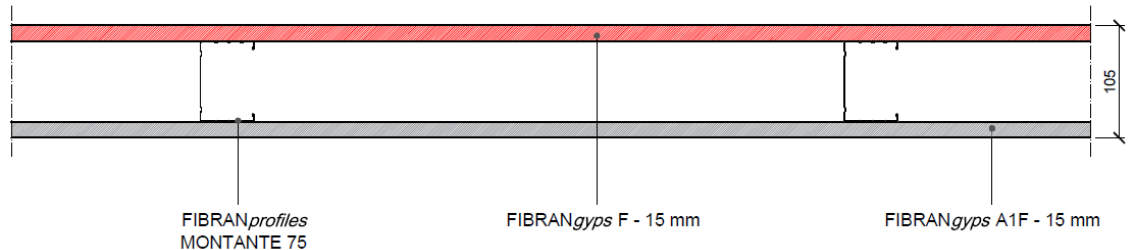


Partition FIBRAN A1FW 105/75

Partition drywall EI 60 - thickness 105 mm



COMPONENTS

Plasterboards

1 layer of **FIBRANGyeps F** both side, thickness **15 mm**, CE marked - **type F** according to EN 520, classified **A+** according to EN ISO 16000-09, fire reaction **A2-s1, d0** according to EN 13501-1, weight 13,1 kg/m², water vapor resistance factor $\mu=10$, thermal conductivity $\lambda=0,25$ W/m K and specific heat $cp=1,03$ kJ/kg K according to EN 10456

1 layer of **FIBRANGyeps A1F***, thickness **15 mm**, *incombustible*, CE marked- **type F** according to EN 520, classified **A+** according to EN ISO 16000-09, fire reaction **A1** according to EN 13501-1, weight 13,1 kg/m², water vapor resistance factor $\mu=10$, thermal conductivity $\lambda=0,25$ W/m K and specific heat $cp=1,03$ kJ/kg K according to EN 10456

Metal frame thickness 0,6 mm conform to EN 14195

Channels **FIBRANprofiles GUIDA 75** mechanically fixed to the floor and ceiling using fixing nails at a maximum spacing of 500 mm;

Studs **FIBRANprofiles MONTANTE 75**, max axial spacing every 600 mm, slotted to allow passage of the installations

Screws

Self-drilling screws **FIBRANGyeps SCREW 3,5 x 25 mm** with resistance in salt spray test not less than 72 hours, fixed max 150 mm each

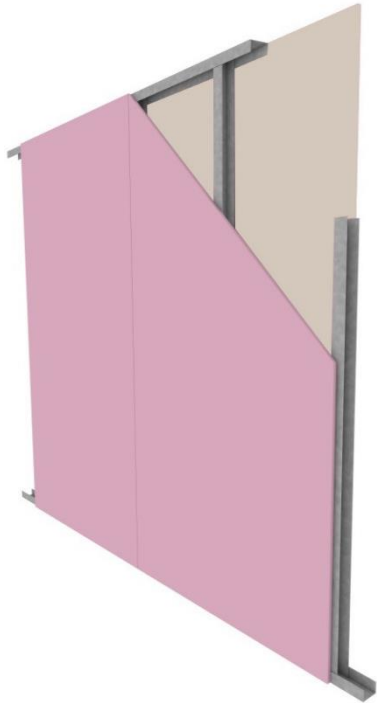
Adhesive tape and joint filler

Treatment of the joints between plasterboards and head of screws with **FIBRANGyeps JF**, CE marked 3B according to EN 13963, and reinforcing tape **FIBRANGyeps TAPE** according to the level quality Q2 (Eurogypsum)

**Suitable for rooms where incombustible performance are required*

Partition FIBRAN A1FW 105/75

Technical features



Fire rating

Fire rating: **EI 60** (Classification Report LAPI 50/C/10-89FR according to EN 1364-1)

Max height: 4 m

Suitable for rooms where incombustible performance are required

Mechanical performance

FIBRANprofiles channels and studs DIN 75 mm, max axial spacing every 600 mm, thickness 6/10 mm conform to EN 14195.

Profiles must be designed according to local regulation and specific application.

In case of walls longer than 15 meters, an expansion joint must be made every 10 meters or at structural joints

Finishing

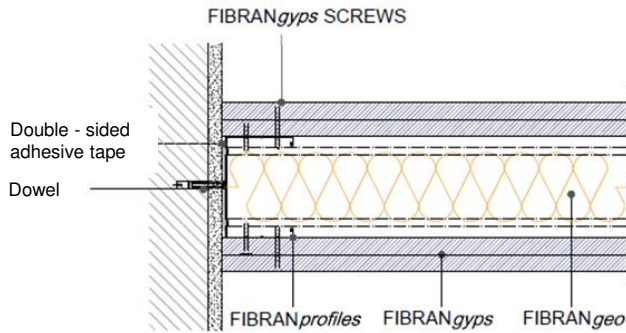
According to quality level required (Eurogypsum). Use FIBRANGyps JF READY MIX for level Q4

Sustainability

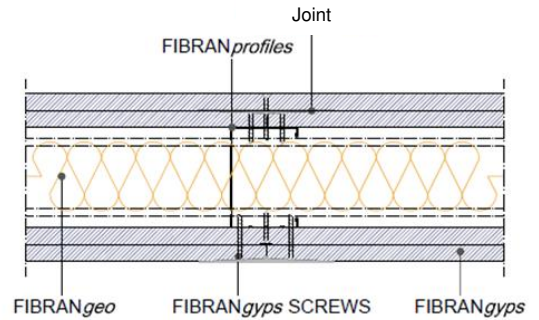
FIBRANGyps plasterboards are classified A+, the best one according to EN ISO 16000-09, with regards to the emission of formaldehyde, acetaldehyde and other substances

Partition FIBRAN A1FW 105/75

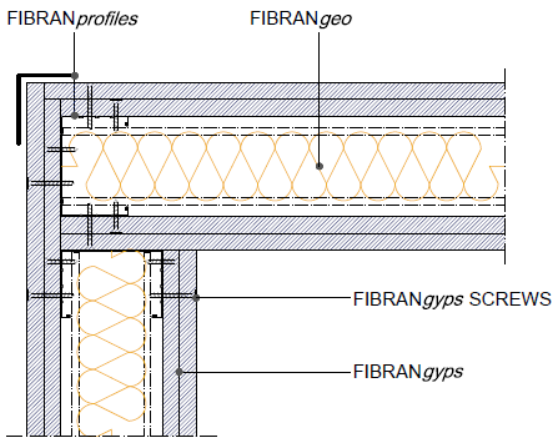
Construction details



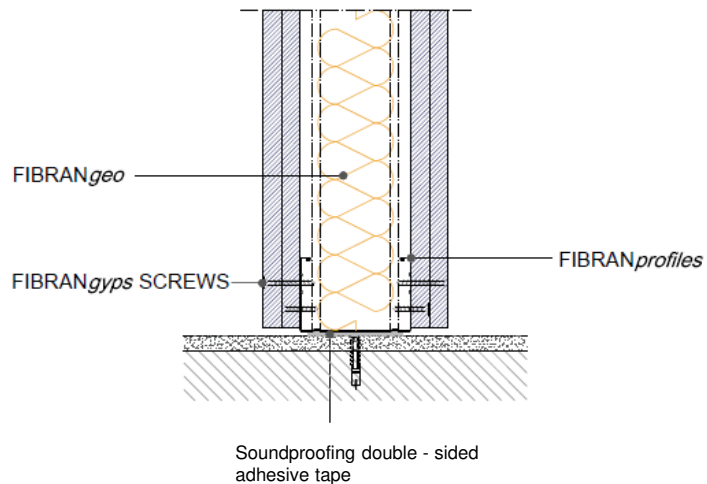
Detail. 1 WALL CONNECTION



Detail. 2 JOINT



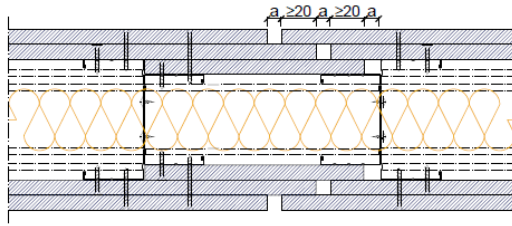
Detail. 3 CORNER FITTING



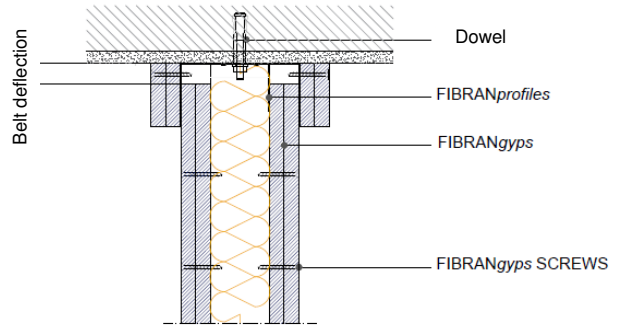
Detail. 4 FLOOR CONNECTION

Partition FIBRAN A1FW 105/75

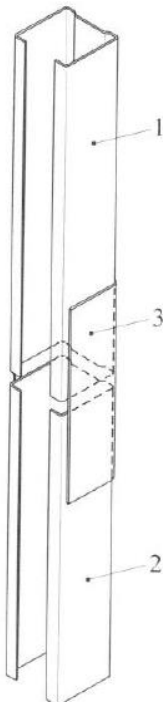
Construction details



Detail. 5 **EXPANSION JOINT**



Detail. 6 **DESOLIDARIZZAZIONE FLOOR - WALL**



N.B. Indicative drawings

LEGEND






- 1. stud
- 2. stud
- 3. stiffening element made with a channel of the same width as the stud; lenght at least 10 times the width

Detail. 7 **JOINT BETWEEN PROFILES**

Partition FIBRAN A1FW 105/75

Quantities of material

Indicative quantities for square meter of partition

		quantity/m ²		quantity/m ²	
		centre 600 mm		centre 400 mm	
Description	UM				
FIBRANgy ^{ps}	m ²	2,1	2,1	2,1	2,1
FIBRAN <i>profiles</i> studs	m	2	4	2,6	5,2
FIBRAN <i>profiles</i> channels	m	0,7	0,7	0,7	0,7
Joint filler FIBRANgy ^{ps} JF	kg	0,7	0,7	0,7	0,7
Adhesive tape FIBRAN <i>profiles</i>	m	1	1	1	1
FIBRANgy ^{ps} TAPE	m	1,67	1,67	1,67	1,67
FIBRANgy ^{ps} SCREW 25mm	pz	20	20	25	25