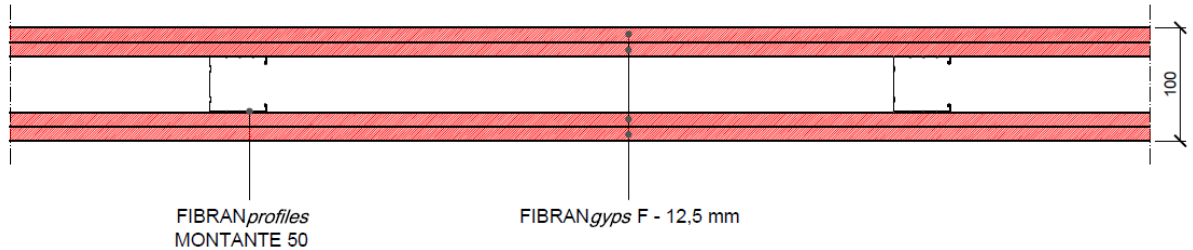


Partition FIBRAN FW 100/50

Partition drywall EI120 - thickness 100 mm



COMPONENTS

Plasterboards

2 layers of **FIBRANGYPS F** both side, thickness **12,5 mm**, CE marked– **type F** according to EN 520, classified **A+** according to EN ISO 16000-09, fire reaction **A2-s1, d0** according to EN 13501-1, weight 9,8 kg/m², water vapor resistance factor $\mu=10$, thermal conductivity $\lambda=0,25$ W/m K and specific heat $cp=1,03$ kJ/kg K according to EN 10456

Metal frame thickness 0,6 mm conform to EN 14195

Channels **FIBRANprofiles GUIDA 50** mechanically fixed to the floor and ceiling using fixing nails at a maximum spacing of 500 mm;

Studs **FIBRANprofiles MONTANTE 50**, max axial spacing every 600 mm, slotted to allow passage of the installations

Screws

Self-drilling screws **FIBRANGYPS SCREW 3,5 x 25** and **3,5 x 35 mm** with resistance in salt spray test not less than 72 hours, fixed max 150 mm each

Adhesive tape and joint filler

Treatment of the joints between plasterboards and head of screws with **FIBRANGYPS JF**, CE marked 3B according to EN 13963, and reinforcing tape **FIBRANGYPS TAPE** according to the level quality Q2 (Eurogypsum)

Partition FIBRAN FW 100/50

Technical features



Fire rating

Fire rating: EI 120 until 4m (Classification Report IG 304716/3532FR according to EN 1364-1)

Mechanical performance

FIBRANprofiles channels and studs DIN 50 mm, max axial spacing every 600 mm, thickness 6/10 mm conform to EN 14195.

Profiles must be designed according to local regulation and specific application.

In case of walls longer than 15 meters, an expansion joint must be made every 10 meters or at structural joints.

Finishing

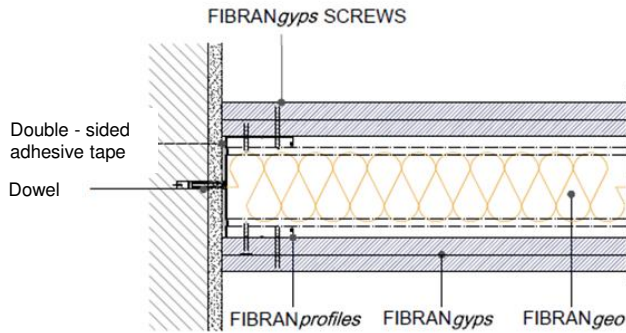
According to quality level required (Eurogypsum). Use FIBRANGyps JF READY MIX for level Q4

Sustainability

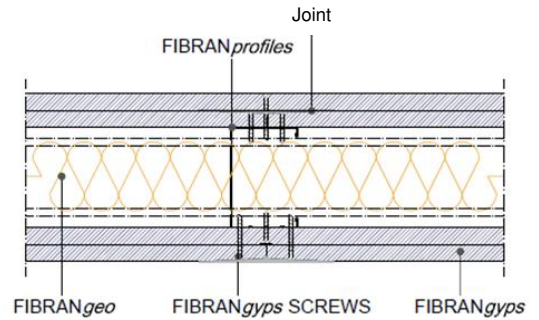
FIBRANGyps plasterboards are classified A+, the best one according to EN ISO 16000-09, with regards to the emission of formaldehyde, acetaldehyde and other substances.

Partition FIBRAN FW 100/50

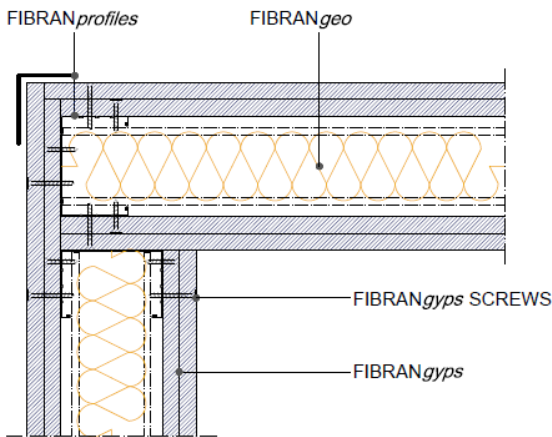
Construction details



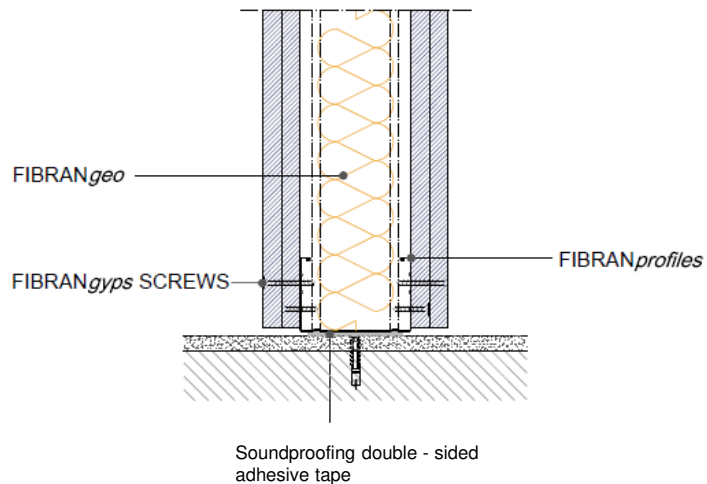
Detail. 1 **WALL CONNECTION**



Detail. 2 **JOINT**



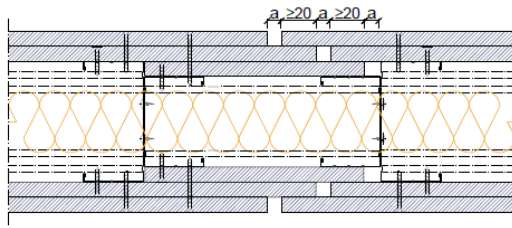
Detail. 3 **CORNER FITTING**



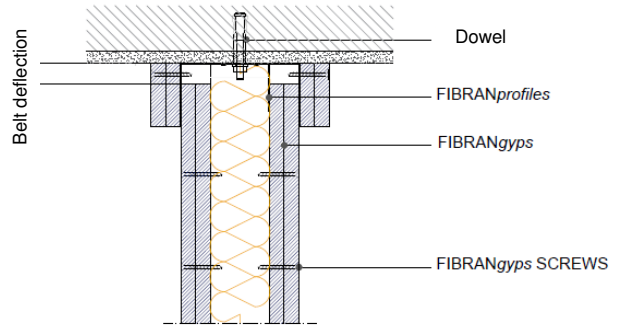
Detail. 4 **FLOOR CONNECTION**

Partition FIBRAN FW 100/50

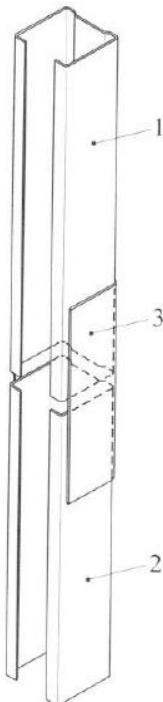
Construction details



Detail. 5 **EXPANSION JOINT**



Detail. 6 **DESOLIDARIZZAZIONE FLOOR - WALL**



N.B. Indicative drawings

LEGEND

- 1. stud
- 2. stud
- 3. stiffening element made with a channel of the same width as the stud; lenght at least 10 times the width

Detail. 7 **JOINT BETWEEN PROFILES**

Partition FIBRAN FW 100/50

Quantities of material

Indicative quantities for square meter of partition

		quantity/m ²		quantity/m ²	
		centre 600 mm		centre 400 mm	
Description	UM				
FIBRANgyps	m ²	4,2	4,2	4,2	4,2
FIBRANprofiles studs	m	2	4	2,6	5,2
FIBRANprofiles channels	m	0,7	0,7	0,7	0,7
Joint filler FIBRANgyps JF	kg	0,7	0,7	0,7	0,7
Adhesive tape FIBRANprofiles	m	1	1	1	1
FIBRANgyps TAPE	m	1,67	1,67	1,67	1,67
FIBRANgyps SCREW 25mm	pz	20	20	25	25
FIBRANgyps SCREW 35mm	pz	25	25	30	30